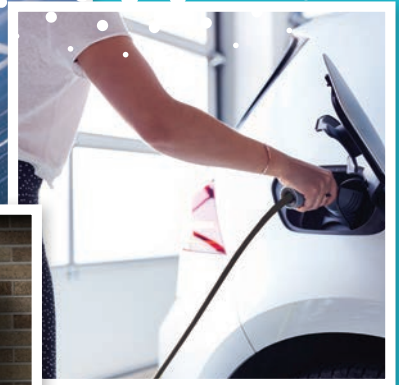
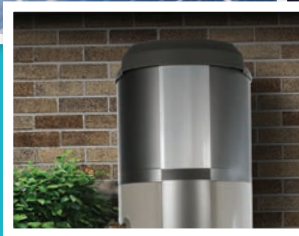
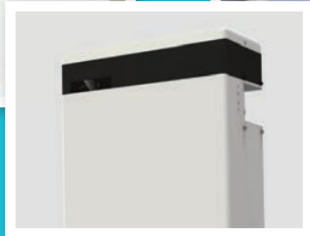


**ALLCASTLE HOMES**



**GREAT  
ENERGY  
SAVINGS  
PACKAGE**



**BUILD GREENER WITH  
ALLCASTLE HOMES**

**PREMIER PLUS+ PACKAGE UPGRADE  
VALUED AT \$80K, FOR ONLY \$9,995**

A smiling woman with long brown hair is holding a young child with blonde hair. They are both smiling and looking towards the right. The background is a bright, hazy sunset over a field. In the top right corner, there is a blue circle with a white dotted border containing the text "GREAT ENERGY SAVINGS PACKAGE".

**GREAT  
ENERGY  
SAVINGS  
PACKAGE**

# **BUILD GREENER WITH ALLCASTLE HOMES**

Our **Premier Plus+ Upgrades** save money and help live your green dream

**Now you can upgrade your home's comfort and energy efficiency with Allcastle Homes' Energy Savings Package.**

Live more comfortably and keep your energy bills low with higher rated insulation. Ensure your EV is ready to drive with your garage charging station and reduce rising electricity bills with solar panels that power your home using the sun's renewable energy. You'll find a lot more to make you smile in this brochure and it could all be yours! Make your move today, upgrade to our Premier Plus+ Energy Savings Package and start living your green dream today!

# Energy Saving Upgrades



## 1. DAIKIN AIR-CONDITIONING

**Upgrade to a Daikin Superior Inverter fully ducted reverse-cycle air-conditioning system (home specific).**

With innovative features, superior performance, and a trusted reputation, your Daikin Superior Inverter upgrade can provide precise reverse-cycle temperature control comfort – all year round. Your superior Air-Conditioning upgrade is fully ducted to quietly distribute air evenly throughout your entire home and deliver consistent comfort in every room with less energy consumption, so you'll also save money for years to come.

---



## 2. SOLAR SYSTEM

**6.6kw Solar Systems, 15 X 440w Solar Panels & 5kw Standard Single Phase Inverter. Supplied & installed**

Power up your comfort and your savings with 15 x 440w Solar roof panels harnessing the sun's free energy. This upgrade allows you to enjoy year-round, emission-free electricity and even earn money by selling any surplus back to the grid. Masterfully installed on your roof, these discreet panels future-proof your home, increase your property's market value and contribute to a greener planet by reducing your carbon footprint.

---



## 3. SOLAR BATTERY STORAGE SYSTEM

**1 x 5.8kWh Solar Battery, Single Phase Hybrid Inverter, Upgrade in battery enclosure.**

Energy collected by your rooftop solar panels is first used to power your appliances. Any excess goes to your battery inverter, which transforms and stores it for when the sun goes down. Capable of storing 5.8kWh, this neat battery upgrade will provide power to your home 24 hours a day, even if there is a power outage. Better still, storing the sun's energy not only provides savings on rising electricity bills but also decreases your impact on the environment.

---

# Energy Saving Upgrades

## GREAT ENERGY SAVINGS PACKAGE



#### 4. EV CHARGER

**Fully fitted 7kw Single Phase Charger with 4m Type 2 lead in garage. Supplied & installed.**

With a wall-mounted EV charger in your garage, you can move towards a greener future and unlock the power of electric driving. This level 2 charger is compatible with all major car brands – equivalent to a full charge overnight for most EVs. Fast, convenient, and efficient, this upgrade gives you control over your charging times and range – so you will always be ready to roll.

---



#### 5. INSULATION UPGRADE TO R6.0

**Top Storey Trussed Roof Ceiling Insulation**

Most homes lose and gain substantial heat through ceilings, so insulation batts are essential to reducing energy bills and maintaining a comfortable indoor temperature year-round. And the higher the R-Value of the batt, the better it works. Manufactured from recycled glass, top-of-the-range R6.0 batts have millions of air pockets that trap air to keep your home cosy. They can help contribute to a more energy-efficient and eco-friendly home.

---



#### 6. ROOF SARKING

**Provide sarking under roof tiles to help seal and insulate the home.**

The importance of good quality roof sarking cannot be understated. It's a pliable membrane that sits directly under your roofing. Like a second protective skin, it enhances your ceiling insulation's efficiency, reduces draughts, and protects you from storm-driven rain and dust. Roof sarking also minimises the risk of condensation.

---

# Make it Home with Allcastle Homes



## 7. WALL SARKING

**Provide wall sarking to the exterior wall frame to seal and insulate the home.**

Like roof sarking, wall sarking protects your home and helps you to live more comfortably. Wall sarking is a tough, weatherproof membrane that completely wraps your house frame. It stands behind your exterior cladding shielding your home and preventing draughts from blowing through. It also helps make your home more comfortable by keeping it warmer in winter or cooler in summer.

---



## 8. HEAT PUMP HOT WATER

**Provide highly energy efficient 250ltr heat pump H.W.S system.**

Clean, green heat pump technology takes heat from the air, providing you with a constant supply of hot water. It's patented in-tank heating coil ensures maximum efficiency and minimal heat loss, while the fully insulated storage tank and robust refrigeration system enhance thermal efficiency. And with a large 250-litre tank, a reliable, cost-effective, energy-efficient hot water for the whole family.

---



## 9. THERMAL UPGRADES

**Offer includes \$5,000 provisional allowance towards achieving 7-Star Energy Efficiency.**

Every new house built in Australia must meet a minimum NatHERS 7-star energy efficiency rating. The good news is our Thermal Upgrade gives you \$5000 to help you comply. You can spend it on energy-efficient design elements such as optimal insulation, energy-efficient appliances, and extra solar panels. Collectively they can reduce your energy consumption and greenhouse gas emissions, resulting in a more sustainable and comfortable home. And what's good for our planet is good for you.

---

# Kitchen Upgrades



TECHNIKA® 

## 10. BLACK TECHNIKA KITCHEN APPLIANCES

Upgrade to Technika 900mm Black Under Benchtop Oven TTDT910-6, 900mm Gas Black Glass Cooktop TGC9GLBK, 900mm Concealed Stainless Steel Rangehood TUR90S, Black Dishwasher TGDW6BK & Belling Black Microwave BD28MBK With Trim Kit.



## 11. CUPBOARD DOORS & DRAWERS

Upgrade to soft close doors and drawers in the kitchen cupboards.

## 12 & 13. KITCHEN SINK & TAPWARE

Upgrade to square under-mount double bowl kitchen sink with polished edge from builder's range.

Upgrade to Mizu Drift chrome (3/4 Star) tapware to kitchen (1 set in total).

## 14, 15 & 16. BENCHTOPS, CUPBOARD DOOR PROFILE AND EXTERNAL DUCTING

Upgrade the front edge strip and two front side edges of the island benchtop to 60mm Smartstone engineered quartz from the builder's range.

Upgrade the kitchen cupboards to handleless sharknose door profile to front island and cooktop run with 10mm overhang for overhead cupboards (no handles).

Provide external ducting to rangehood to reduce humidity and steam in the cooking area.

# Bathroom & Laundry Upgrades



## 17 & 18. FULL HEIGHT TILING & SHOWER SCREENS

Upgrade to full height tiling to ceiling height in the upstairs main bathroom with your choice of ceramic tiles with a \$30/sqm retail tile allowance. Includes tiling to window reveals

Upgrade from framed to semi-frameless shower screens to main bathroom and ensuite.



## 19 & 20. STONE TOP VANITY & TAPWARE

Upgrade to 20mm Smartstone engineered quartz stone top to vanities with single porcelain bowl from the builder's range to main bathroom, ensuite and optional 3 piece powder room if applicable.

Upgrade to Mizu Drift chrome (3/4 star) tapware to bathroom and ensuite (7 sets in total).



## 21. CUPBOARD DOORS

Upgrade to high gloss **OR** feature timber look handleless sharknose cupboard doors.

## 22. SMART FLOOR TILE WASTE

Upgrade to a smart floor tile waste to included wet floor areas.



## 23. RECESSED SOAP NICHES

Upgrade to tiled recessed soap niche to showers, 300mm(h) x 600mm(w).



## 24, 25 & 26. LAUNDRY UNIT, LAUNDRY BENCHTOP & MIXER TAP

Upgrade to 20mm Smartstone engineered quartz benchtop with drop-in tub and concealed hot and cold taps for washing machine, 1500mm long laundry unit with handleless sharknose cupboard doors & Mizu Drift chrome mixer tap.

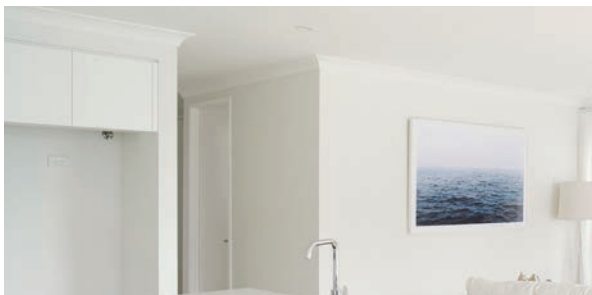
# Designer Home Upgrades



## 27. GROUND FLOOR CEILING HEIGHT

Upgrade the ground floor ceiling height to a higher 2590mm(h) Note: Not applicable to duplexes.

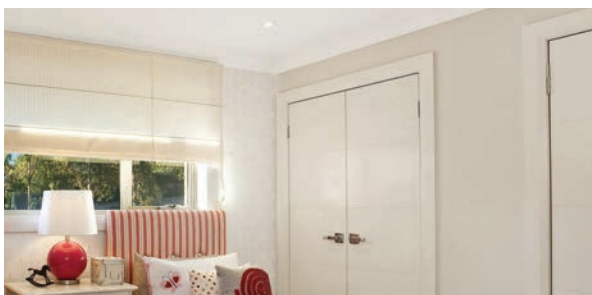
---



## 28. GROUND FLOOR DOOR HEIGHT

Upgrade ground floor internal flush painted door height to a high 2340mm(h).

---



## 29. ROBE DOOR HEIGHT

Upgrade ground floor robe flush painted door height to a high 2340mm(h).



### 30. FRONT ENTRANCE DOOR

Upgrade to a stylish wide front entrance door in painted finish with clear glass from the builder's range.

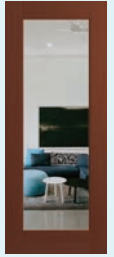
Models: (i) XIL1 OR (ii) JST1  
Size: 2340mm(h) x 1020mm(w)



**HUME DOORS  
& TIMBER**  
100% Australian Owned



(i) XIL1



(ii) JST1



**CLIPSAL**  
by Schneider Electric

### 31. LIGHT SWITCH

Upgrade all power points and switches in the home to Clipsal Iconic range.

## Home Security Upgrades



### 32. BOSCH ALARM SYSTEM

- 1 x Bosch 2000 Alarm Panel
- 1 x Bosch Touch Code Pad
- 6 x PIR Sensors
- 1 x Internal Siren
- 1 x External Siren
- 2 x 4 Button Remote Controls
- Controls alarm and garage door open/close
- Supplied, fitted & Installed.



### 33. VIDEO INTERCOM

Video intercom system with 1 x video door station (surface mounted) and 1 x 7" LCD colour monitor.

# \$80K VALUE BONUS UPGRADE INCLUSIONS FOR ONLY \$9,995

## ENERGY SAVING PACKAGE

|                                 |   |
|---------------------------------|---|
| 1. Daikin Air-Conditioning      | Upgrade to a Daikin superior inverter fully ducted reverse-cycle air-conditioning system (home specific).     |
| 2. Solar System                 | 6.6kw Solar Systems, 15 X 440w Solar Panels & 5kw Standard Single Phase Inverter. Supplied & installed.       |
| 3. Solar Battery Storage System | 1 x 5.8kWh Solar Battery, Single Phase Hybrid Inverter Upgrade in battery enclosure.                          |
| 4. EV Charger                   | 7kw EV Charger in garage. Fully fitted Single Phase charger with 4 metre Type Two lead. Supplied & installed. |
| 5. Insulation                   | Upgrade to R6.0 Top Storey Trussed Roof Ceiling Insulation.   |
| 6. Roof Sarking                 | Provide sarking under roof tiles to help seal and insulate the home.  |
| 7. Wall Sarking                 | Provide wall sarking to the exterior wall frame to seal and insulate the home.                                |
| 8. Heat Pump Hot water          | Provide highly energy efficient 250ltr heat pump H.W.S system.  |
| 9. Thermal Upgrades             | Offer includes \$5,000 PA (provisional allowance) towards achieving 7-Star Energy Efficiency.                 |

## KITCHEN / APPLIANCE UPGRADES

|  |  |
|--|--|
| 10. Modern Tecknika Kitchen Appliances | Upgrade to Technika 900mm Black Under Benchtop Oven TTDT910-6, 900mm Gas Black Glass Cooktop TGC9GLBK, 900mm Concealed Stainless Steel Rangehood TUR90S, Black Dishwasher TGDW6BK & Belling Black Microwave BD28MBK With Trim Kit. |
| 11. Cupboards Doors/Drawers            | Upgrade to soft close doors and drawers to the kitchen cupboards   |
| 12. Kitchen Sink                       | Upgrade to square under-mount double bowl kitchen sink with polished edge from builder's range   |
| 13. Tapware                            | Upgrade to Mizu Drift Chrome (3/4 Star) tapware to kitchen (1 set in total)  |
| 14. Benchtops                          | Upgrade the front edge strip and two front side edges of the island benchtop to 60mm Smartstone engineered quartz from the builder's range   |
| 15. Cupboards Door Profile             | Upgrade kitchen cupboards and drawers to handleless sharknose door profile to front island and cooktop run with 10mm overhang for overhead cupboards (no handles).   |
| 16. External Ducting                   | Provide external ducting to rangehood to reduce humidity and steam in the cooking area.  |

## BATHROOM & LAUNDRY UPGRADES

|                            |  |
|----------------------------|--|
| 17. Full Height Tiling     | Upgrade to full height tiling to ceiling height in the upstairs main bathroom with your choice of ceramic tiles with a \$30/sqm retail tile allowance. Includes tiling to window reveals.  |
| 18. Shower Screens         | Upgrade from framed to Semi-frameless shower screens to main bathroom and ensuite.   |
| 19. Stone Top Vanity       | Upgrade to 20mm Smartstone engineered quartz stone top to vanities with single porcelain bowl from the builder's range to main bathroom, ensuite and optional 3 piece powder room if applicable. The stone top colour to match the kitchen benchtop. |
| 20. Tapware                | Upgrade to Mizu Drift Chrome (3/4 Star) tapware to bathroom and ensuite (7 sets in total).   |
| 21. Cupboard Doors         | Upgrade to High gloss OR feature timber look handleless sharknose cupboard doors to main bathroom, ensuite and optional 3 piece powder room if applicable from builder's range.  |
| 22. Smart Floor Tile Waste | Upgrade to a smart floor tile waste to included wet floor areas.   |
| 23. Recessed Soap Niches   | Upgrade to tiled recessed soap niches to showers, 300mm (h) x 600mm (w) with \$30/sqm allowance for décor tiles per soap niche.  |
| 24. Laundry Unit           | Upgrade to a 1500mm long laundry unit with designer High Gloss or feature timber look handleless sharknose cupboard doors.   |
| 25. Laundry Benchtop       | Upgrade to 20mm Smartstone engineered quartz benchtop with drop-in tub and concealed hot and cold taps for washing machine. The laundry benchtop colour to match the kitchen benchtop.   |
| 26. Laundry Mixer Tap      | Upgrade to Mizu Drift chrome mixer tap from builder's range  |

## DESIGNER HOME UPGRADES

|                                 |   |
|---------------------------------|---|
| 27. Ground Floor Ceiling Height | Upgrade the ground floor ceiling height to a higher 2590mm (h) Not applicable to duplexes.  |
| 28. Ground Floor Door Height    | Upgrade ground floor internal flush painted door height to a high 2340mm (h).   |
| 29. Robe Door Height            | Upgrade ground floor robe flush painted door height to a high 2340mm (h).   |
| 30. Front Entrance Door         | Upgrade to a stylish wide front entrance door in painted finish with clear glass from the builder's range. Models: (i) XIL1 or (ii) JST1 Size: 2340mm (h) x 1020mm (w). |
| 31. Light Switch                | Upgrade all power points and switches in the home to Clipsal Iconic range.  |

## HOME SECURITY UPGRADES

|                        |  |
|------------------------|--|
| 32. Bosch Alarm System | 1 x Bosch 2000 Alarm Panel, 1 x Bosch Touch Code Pad, 6 x PIR Sensors, Internal & External Sirens, 2 x 4 Button Remote Controls & controls alarm & garage door open/close. Supplied, fitted & installed. |
| 33. Video Intercom     | Video intercom system with 1 x video door station (surface mounted) and 1 x 7" LCD colour monitor.   |

# Visit our Allcastle display homes to view the Premier Collection home designs

[allcastlehomes.com.au/display-homes](http://allcastlehomes.com.au/display-homes)



Grandworth Dynasty 40, New HomeWorld Leppington



Gallery MKII, New HomeWorld Leppington



Grandworth Newbury 37, HomeWorld Box Hill



Grandworth Dynasty 43, HomeWorld Box Hill



Crest, HomeWorld Marsden Park



Gallery, HomeWorld Marsden Park

## **\*Premier Plus+ Energy Savings Package SALE 2023 - \$80K Total Value Upgrades (Included Energy Savings Package) only paying \$9,995 TERMS & CONDITIONS:**

This offer is only available to all new customers who request and pay for a quote on any Premier Collection with Premier Plus+ Inclusion Allcastle home and accept the quotation tender within seven (7) days of presentation and proceed to contract signing as per conditions. Offer only applicable to Paid Quotes from 29/07/2023 to 31/10/2023 to homes in the Premier Plus+ Collection range with Premier Plus+ Inclusions price as per 25/05/2023 pricelist, or subsequent pricelist. This offer cannot be used in conjunction with any other offer. This total offer is valued up to \$80,978. The Promotion is only open to participants building in Allcastle Homes build zones within NSW. This offer is strictly limited to the items as detailed in the brochure and credits are not available for any items not used. House and Land packages are excluded from this offer. This offer supersedes any previously published or advertised offers. Allcastle Homes has the right to substitute any items with similar products of equal value at any time and change or withdraw offers without notice. Allcastle Homes has the right to change, extend or terminate terms and conditions of promotional offers at their discretion. The prices, offer and inclusions subject to change. Note: Photos shown may depict items not included in the promotion and not supplied by Allcastle Homes. Please check with your sales consultant or refer to your tender document for details. Visit [www.allcastlehomes.com.au/terms-and-conditions](http://www.allcastlehomes.com.au/terms-and-conditions) for full details of the offer. Allcastle Homes Pty Ltd | BL39371C



## PREMIER PLUS+

**BUILD GREENER WITH ALLCASTLE HOMES**

*Make it Home*



**1300 255 999**  
**allcastlehomes.com.au**



Allcastle Homes Pty Ltd | BL39371C